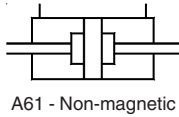


A60 - Magnetic



A61 - Non-magnetic

AIR CYLINDER

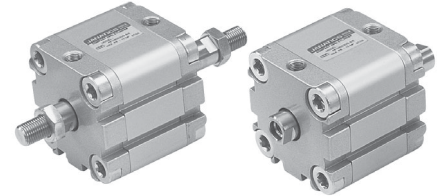
Series A60, A61

Cat No A60, A61 - 01 - 02

Double End Double Acting Cylinder (Compact ISO type) Ø32 - 100 mm

Features

- Elastomer end cushioning
- Wide varieties of mountings
- Space saving
- Magnetic and Non magnetic version
- Aluminium profile (square) cylinder barrel
- Magnetic sensor common for all sizes
(Refer Magnetic sensor catalogue)



Technical Specifications

Piston dia (mm)	32	40	50	63	80	100
Standard strokes * (mm)	10 15 20 25 30 40 50 60 70 80					
Medium	Compressed air - filtered - lubricated					
Working pressure range	0.5 - 10 bar					
Medium temperature	5° - 60° c					
Materials of construction	Aluminium, Nitrile, Steel, Polyurethane					
Mountings	Basic cylinder,		Foot mounting,		Flange, Female clevis,	
Accessories	Rod end fork,		Rod end aligner,		Rod end spherical eye	

* For Non standard or longer stroke cylinders, contact your regional office, dealer or **JANATICS**

Output force (force in N : 1N = 0.1 kgf)

Bore dia in mm	Rod dia in mm	Working pressure in bar								
		2	3	4	5	6	7	8	9	10
32	12	124	187	249	311	373	435	498	559	622
40	12	206	309	411	514	617	720	823	926	1029
50	16	317	476	634	793	952	1110	1269	1427	1586
63	16	525	787	1050	1312	1575	1837	2099	2362	2624
80	20	848	1272	1696	2120	2544	2969	3393	3817	4241
100	20	1357	2036	2714	3393	4071	4750	5429	6107	6786

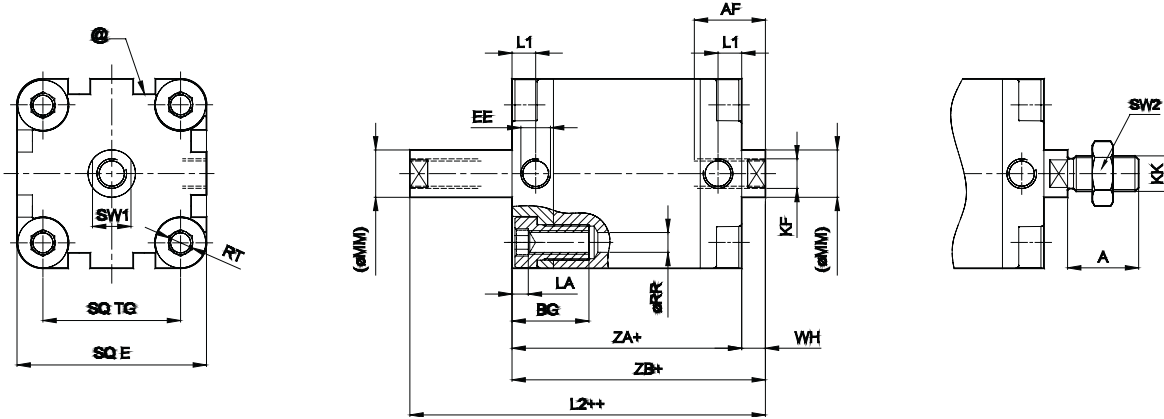
(Above values have been worked out taking frictional loss into consideration)

AIR CYLINDER

Series A60, A61

Cat No A60, A61 - 01 - 02

Basic cylinder



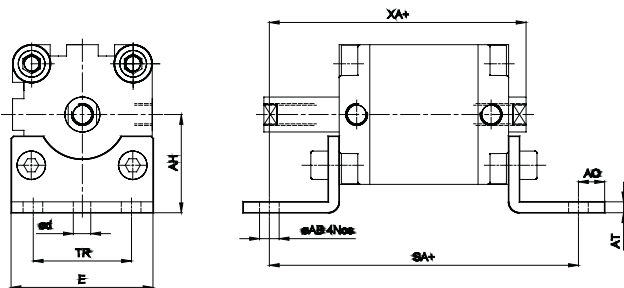
+ Add stroke
++ Add stroke twice

Bore dia	KF	MM	AF	RR min	RT	SW1	L1	LA	BG min	EE	TG	E max	ZA	TOL	ZB	TOL	WH	TOL	L2	TOL	KK	A -0.5	SW2	Stroke tol
32	M8x1.25	12	12	5.1	M6	10	7.5	5.5	15	G1/8	32.5	45	44	±0.5	51	±1.6	7	±1.6	59.5	±1	M10x1.25	19	17	+2 0
40	M8x1.25	12	12	5.1	M6	10	7.5	5.5	15	G1/8	38	51	45	±0.7	52		7		60		M10x1.25	19	17	
50	M10x1.5	16	16	6.4	M8	13	7.5	5.5	16	G1/8	46.5	64	45	±0.8	53		8		62		M12x1.25	22	19	
63	M10x1.5	16	16	6.4	M8	13	7.5	5.5	16	G1/8	56.5	74	49	±0.8	57	±2	8	±2	66	±1.2	M12x1.25	22	19	+2.5 0
80	M12x1.75	20	20	8.4	M10	17	8	5.5	17	G1/8	72	94	54	±1	64		10		75		M16x1.5	28	24	
100	M12x1.75	20	20	8.4	M10	17	12.5	5.5	17	G1/8	89	111	67	±1	77		10		88		M16x1.5	28	24	

@ - T Groove for magnetic sensor, Refer catalogue series AM4

Foot mounting

+ Add stroke

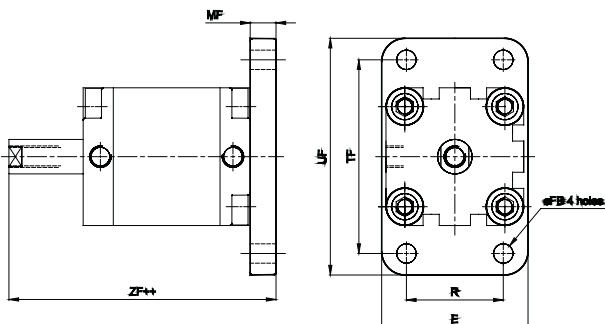


Bore dia	AB H14	AO max	AT	AH JS16	d*	TR JS14	E	SA	TOL	XA	TOL	Recommended Bolt size
32	7	7	4	33.5	5.8	32	45	76	±1.25	67	±1.25	M6
40	10	9	4	38	7.8	36	52	81		70		
50	10	9	5	45	7.8	45	65	87	±1.6	74	±1.6	M8
63	10	9	5	50	7.8	50	75	91		78		
80	12	11	6	63	9.8	63	95	106	±1.6	90	±1.6	M10
100	14.5	13	6	74	11.8	75	115	121		104		M12

* Suitable for reaming

Flange

+ Add stroke



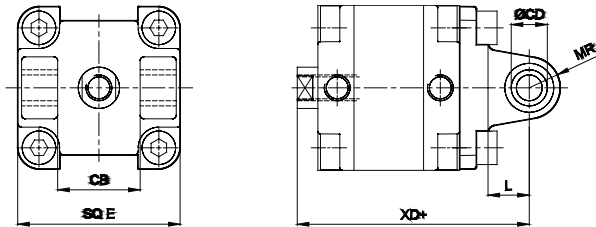
Bore dia	MF	UF	TF ±0.3	R ±0.3	E	FB H13	ZF	TOL	Recommended Bolt size
32	10	80	64	32	50	7	62.5	±1.8	M6
40	10	90	72	36	55	9	63		M8
50	12	110	90	45	68	9	66		
63	12	125	100	50	78	9	70	±2.2	M10
80	16	155	126	63	100	12	81		M12
100	16	185	150	75	120	14	94		

AIR CYLINDER

Series A60, A61

Cat No A60, A61 - 01 - 02

Female clevis

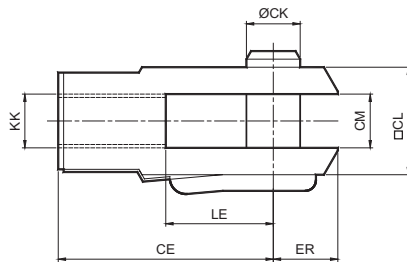


+ Add stroke

Bore dia	CD H9	CB H14	L	MR	E	XD	TOL
32	10	26	12	11	45	73	±1.8
40	12	28	15	13	51	77	
50	12	32	15	13	64	80	
63	16	40	20	17	74	89	
80	16	50	20	17	94	100	±2.2
100	20	60	25	21	111	118	

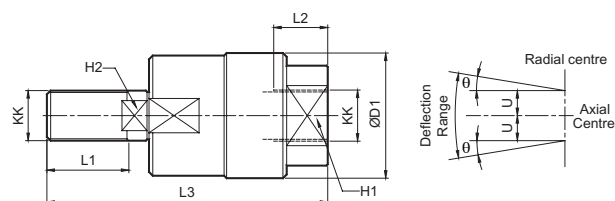
ACCESSORIES FOR AIR CYLINDER Series A60, A61

Rod end Fork (ISO 8140)



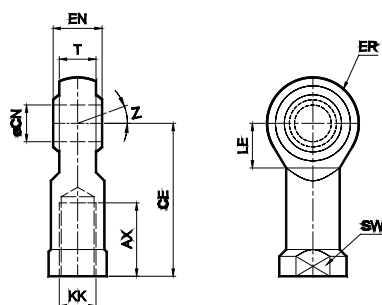
Bore dia	KK	CE	CK f8	CM B12	LE	ER max	CL	Ordering no.
32 / 40	M10x1.25	40	10	10	20	16	20	AF010
50 / 63	M12x1.25	48	12	12	24	19	24	AF012
80 / 100	M16x1.5	64	16	16	32	25	32	AF016

Rod end Aligner



Bore dia	KK	L1	L2	L3	H1	H2	D1	U	±θ°	Ordering no.
32 / 40	M10x1.25	20	14	65	17	8	28	0.75	5	AR010
50 / 63	M12x1.25	22	18	75	19	10	32	1	5	AR012
80 / 100	M16x1.5	25	22	91	27	13	41	1	5	AR016

Rod end spherical eye (ISO 8139)



Bore dia	KK	CN H9	T	EN h12	CE	LE min	ER max	AX	SW	Z	Ordering no.
32 / 40	M10x1.25	10	10.5	14	43	15	14	20	17	13°	AP010
50 / 63	M12x1.25	12	12	16	50	17	16	22	19		AP012
80 / 100	M16x1.5	16	15	21	64	22	21	28	22	15°	AP016

AIR CYLINDER

Series A60, A61

Cat No A60, A61 - 01 - 02

How to order

A

Model		Piston Ø (mm)		Stroke (mm)		Mountings	M - Male thread
60	Magnetic cylinder	032	- Ø 32	010	- 10	O - Basic	
61	Standard cylinder	040	- Ø 40	015	- 15	L - Foot Mounting	
		050	- Ø 50	020	- 20	F - Front Flange	
		063	- Ø 63	025	- 25	B - Female Clevis	
		080	- Ø 80	030	- 30		
		100	- Ø 100	040	- 40		
				050	- 50		
				060	- 60		
				070	- 70		
				080	- 80		

Example:

Ordering no. for standard cylinder with 40 dia bore, 50 mm stroke with Female thread : **A61 040 050 O**

Ordering no. for standard cylinder with 40 dia bore, 50 mm stroke with Male thread : **A61 040 050 O - M**


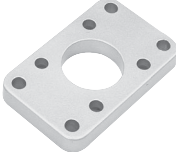

Note:

If ordered as 40 dia, 50 mm stroke cylinder, Basic cylinder **A61 040 050 O** will be supplied.

For repeat order when the details are taken from cylinder nameplate, mention the mounting style separately.

For ordering **Accessories** refer corresponding tables for part numbers.

For ordering individual **Mounting** kits (If needed separately) the order numbers are as below

Piston Ø	Foot mounting *	Flange *	Female clevis *
			
32	ML2032	MF1032	MB1032
40	ML2040	MF1040	MB1040
50	ML2050	MF1050	MB1050
63	ML2063	MF1063	MB1063
80	ML2080	MF1080	MB1080
100	ML2100	MF1100	MB1100

* Supplied with 4nos. of screws

For your special requirements of cylinders or for further informations contact your regional office, dealer or **JANATICS**

Subject to change